



# भाग्यलक्ष्मी

Commercial & Residential Complex

**Site Address:**

Bhagyalakshmi Complex,  
Manjusar Bus-Stand, Savli Road, Vadodara.  
Mo.: +91 9099048961, 9099048967

**Office Address:**

210, Silver Coin, Shrenik Park Char Rasta,  
B.P.C. Road, Akota, Vadodara. 390020, India.  
E: spaceagebuilder@gmail.com  
www.spaceagegroup.net

**Disclaimer:**

\* The information contained in this brochure is subject to change as may be approved by the competent authorities and cannot form part of any form or contract. \* All plans are subject to any amendments approved by the competent authorities. \* This brochure shall not be treated as a legal document; it is only for the purpose of information. \* The areas are indicative only. The measurements indicated in the plan may vary at the time of construction. \* All landscaping is conceptual and shall be as per architect's design. Illustration in the brochure are artist impressions and serve only to give an approximate idea of the project. While every reasonable care has been taken in providing this information, the developers cannot be held responsible for any inaccuracy. \* The developers reserve all the rights to make any changes as may be necessitated from time to time in the layout, building plan and specifications without any prior notice. Such changes would be binding to all members.

A Project by



**SPACE AGE**  
BUILDERS



# भाग्यलक्ष्मी

Commercial & Residential Complex

## The habitat of good fortune at Manjusar

Located amid the industrial hub of Vadodara, Manjusar is all set to become the next big thing in Vadodara's realty industry. The area is soon to draw closer to the main city in the years to come.

Bhagyalakshmi - A name that evokes the goddess of luck, place where peace meets prosperity. An elegantly designed residential and commercial complex, Bhagyalakshmi offers you best of facilities and amenities that creates an environment that fosters peaceful living and profitable livelihood.

- Prime location for businesses to thrive
- Ideal residency
- Vastu compliant houses
- Well connected to the main city
- Close proximity to Express highway
- Peaceful and Serene environs



## Common Amenities

- \* Underground and Overhead Water Tank for 24-Hours Water Supply
- \* Portable R.O. System for Individual Flat
- \* Garden/Plantation
- \* Club House with Indoor Games
- \* Ample Parking Space
- \* Anti Termite Treatment
- \* R.C.C. Paver Block Road
- \* Children Play Area
- \* Multi-Purpose Court
- \* Surrounding Compound Wall



Master Plan

## A Landmark of good living

A residence that keeps you close to the buzz of the city yet far from it, Bhagyalakshmi assures you of comfort and convenience in your day-to-day life. We have meticulously planned each home and shop to suit your every requirement and offer peace and prosperity.

Ideal location for corporate guest house and service apartment.

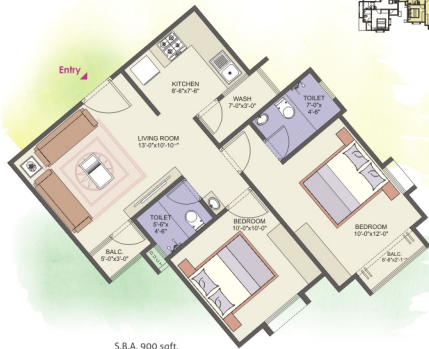
- 1 BHK - 72 Units
- 2 BHK - 96 Units
- Community Center
- Children Play Area & Garden
- Recreation Area
- Security Cabin
- 24hrs. CCTV Surveillance
- Jogging Track

RESIDENTIAL



## RESIDENTIAL

### Typical Floor Plan Layout 2 BHK



### Typical Floor Plan 3D



#### SPECIFICATIONS

##### STRUCTURE

- \* R.C.C. Frame Structure with Earthquake Resistant Design

##### WINDOWS

- \* Aluminium window with safety grill

##### DOORS

- \* Decorative main door with good quality fitting and all internal door will be good quality flush door

##### FLOORING

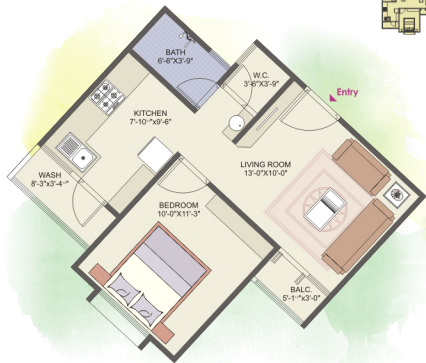
- \* Vitrified tiles flooring in all rooms.

##### BATHROOM

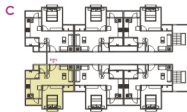
- \* Designer concept tiles on wall and floor

## RESIDENTIAL

### Typical Floor Plan Layout 1 BHK



S.B.A. 700 sqft.



### Typical Floor Plan 3D



#### SPECIFICATIONS

##### KITCHEN

- \* Granite platform with S.S. sink & decorative glazed tiles dedo up to lintel level

##### ELECTRIFICATION

- \* ISI copper wire concealed type with modular switches

##### PLUMBING

- \* Under specialised consultancy & supervision
- \* All plumbing line with c-pvc pipes

##### PAINT

- \* Interior wall finished with plastic paint
- \* Exterior finished by texture colour weather coat paint



## A throbbing business hub of Manjusar

The rapid development of Manjusar inspired us to develop the best infrastructure for businesses to thrive at Bhagyalakshmi. With top facilities and best amenities, we have ensured that you can conduct business efficiently at strategically located shops that offer maximum visibility.

### Ideal location for banks, restaurants and hospitals

- \* 70 Shops \* 70 Offices \* Ample Parking Space \* Loading/Unloading Area
- \* Separate Toilet for Men & Women \* Latest Glass Elevation \* Owner Association Office

## COMMERCIAL



Typical Floor Plan Layout



### SPECIFICATIONS

#### STRUCTURE

- \* R.C.C. frame structure
- \* earthquake resistant design

#### PLASTER & FLOORING

- \* Internal & external smooth plaster
- \* Vitrified tiles with skirting

#### ELECTRIFICATION

- \* ISI copper wire concealed type with modular switches point for signboard

#### SHUTTER

- \* M.S. Rolling Shutter
- \* Decent space for signboard

#### PAINT

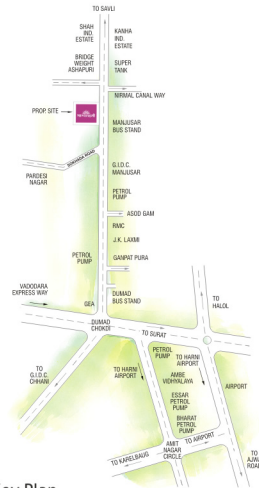
- \* Interior Wall finished with distemper paint,
- \* Exterior finished by texture colour



### Nearby Landmarks

- \* Sokhda
- \* Manjusar GIDC
- \* Savli GIDC
- \* Halol-Jarod GIDC
- \* Express Highway
- \* Vadodara City
- \* GSFC
- \* Indian Oil Depot

**भाग्यलक्ष्मी**  
Commercial & Residential Complex



Key Plan